

EmotIcon

By Systems Training

Introduction

Have you ever found yourself wanting to write a biting remark in an e-mail document, but were afraid to because you don't know how it'll be taken by your audience? That's what emoticons (or smilies) are for. You simply insert them into your e-mail document anywhere to replace some of what's missing in the plain written word.

EmotIcon - the software - makes using smilies simple. Pop EmotIcon up within your comms or word processing program, chose the Find button, find the appropriate emotion or expression and copy it to the clipboard or even simpler, send it directly to your application. You say you don't know what that pesky user means by |- . ? Select the text and copy it to the clipboard. Pop up EmotIcon and chose the Paste button. Voila, EmotIcon tells you the user was trying to convey "concentrating".

Shareware

EmotIcon is shareware. This means you can register EmotIcon for a mere \$15US. But first, you get to use it for a reasonable period of time to see if it's useful to you. A "reasonable period of time" means something less than 30 days. Once registered you will receive new smilies by e-mail for free (CompuServe or Internet) and by disk for a nominal fee (or free if you want to send me a diskette in a SASE).

To register EmotIcon send \$15US (check or money order made out to Systems Training) to:

Systems Training
5901 Warner Ave, Suite 418
Huntington Beach, CA 92649

Please tell us where you first heard of EmotIcon.

Requirements

A PC :-)
Windows 3.1
VBRUN200.DLL

Installation

DOS

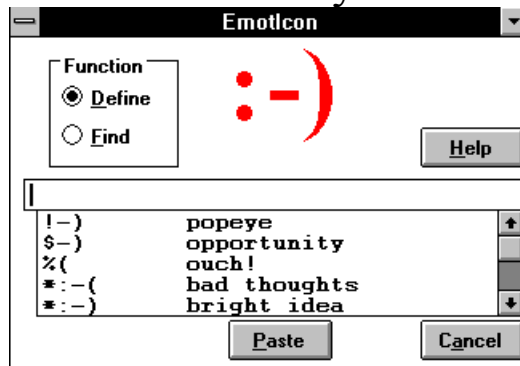
- 1 Copy VBRUN200.DLL to your WINDOWS\SYSTEM directory
- 2 Create a new directory for EmotIcon
- 3 Copy the files from the distribution disk to that new directory

Windows

- 4 Create a new program group for EmotIcon, or (better yet) put it in the Startup program group

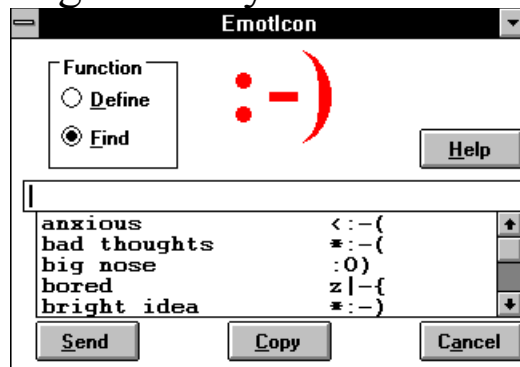
- 5 Create a new program item with the following properties:
- Description: EmotIcon
 - Command Line: The FULL path to the emoticon.exe program
 - Working Directory: The directory created in step 1
 - Shortcut Key: This is up to you
 - Icon: The FULL path to the emoticon.ico icon

Finding the Definition of a Smiley



When EmotIcon begins, it is in definitions mode. If a smiley was copied to the clipboard from another application, simply hit the paste button and the definition will appear in the center dialog box if it exists in the EmotIcon database. If the smiley is not in the clipboard, then type it in - you'll get the same result. If you want to add a smiley to the EmotIcon database, simply add it to the emoticon.txt file with any text editor.

Finding Just the Right Smiley



To select a smiley from the database, chose the Find function radio button. The Paste button turns into the Copy button, and the Send button is added. There are basically three ways to return a smiley to a document.

- Eyeball it That's right, just look at the darned thing and switch back to your document and type it in. This may be difficult with Lumiere. ~~=8-)=[] {
- Copy it Use the Copy button to copy it to the clipboard and then Cancel or minimize EmotIcon. When you get back to the comms or word processing application, paste the smiley from the clipboard.
- Send it Press the Send button, and the EmotIcon window will be automatically minimized and the smiley will be typed directly into your

document (make sure it's ready to receive keystrokes when you leave it for EmotIcon).

Help

Just in case you got here some other way, the Help button will bring up Windows Write with this document you're reading.

What? We missed one?

There must be a zillion possible smileys, and we may have missed one or two. If there's one that you think we should include in the next version, please make note of it when you register, or send us e-mail at:

Internet: johnl@sequoia.com

Compuserve: 72064,1446